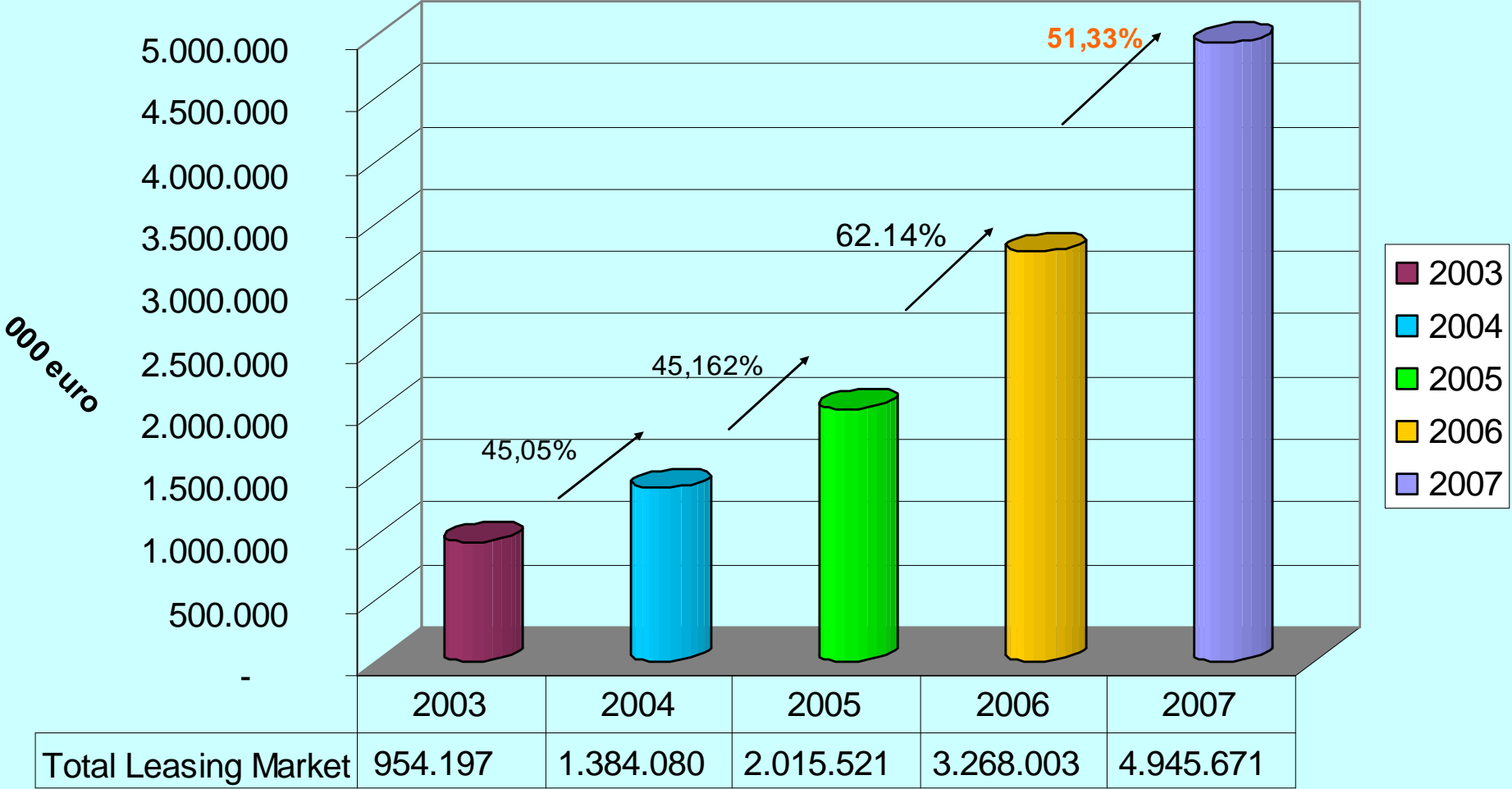
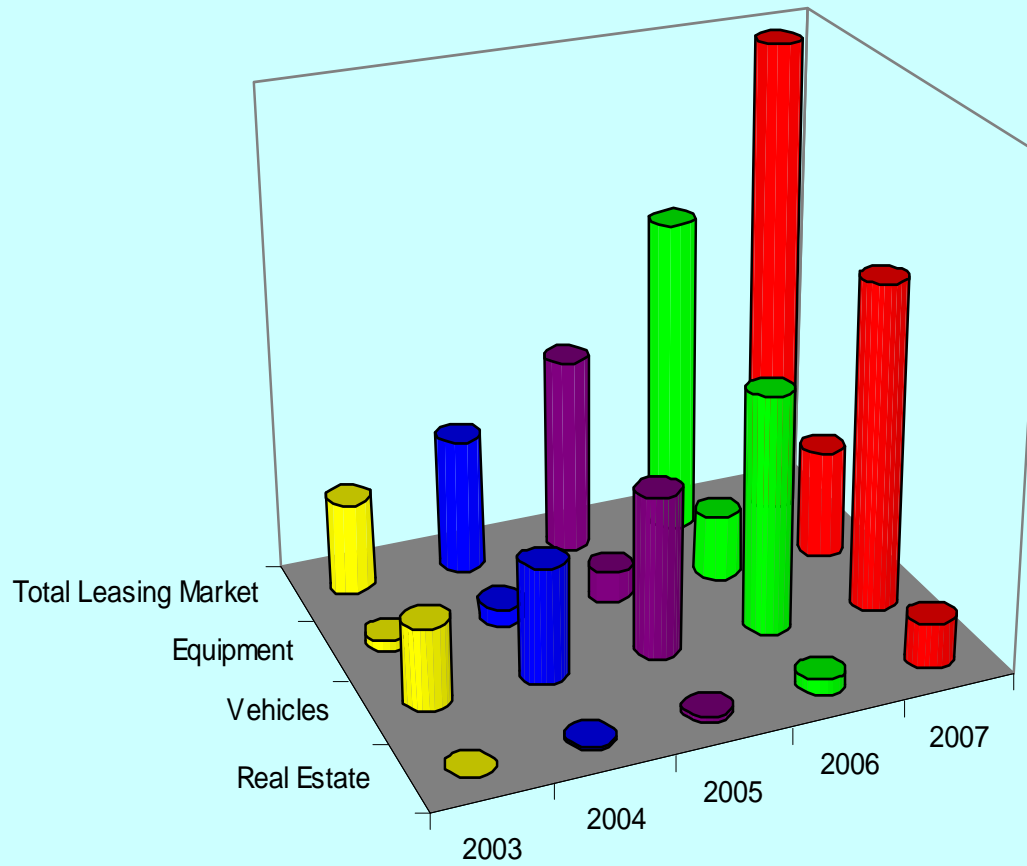


**ROMANIAN LEASING MARKET / Piata de Leasing din Romania**  
**Total Asset Value / Valoare Total Active**  
**2003 - 2007**



**Romanian Leasing Market BY LEASED GOODS 2003 - 2007**  
**Piata Romana de Leasing 2003 - 2007**  
**Total Asset Value - (000 Euro)**

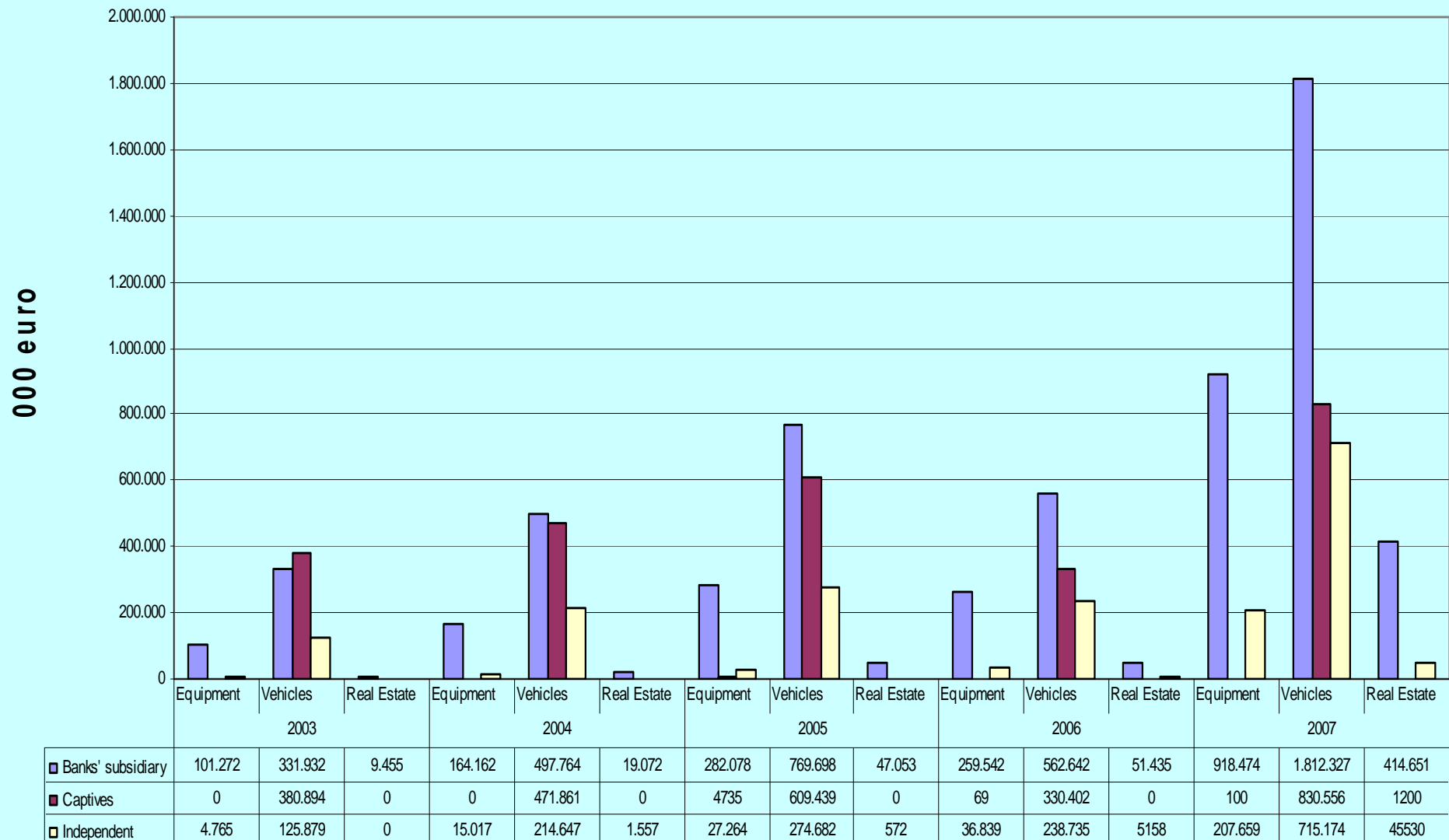


	Total Leasing Market	Equipment	Vehicles	Real Estate
2003	954.197	106.037	838.705	9.455
2004	1.384.080	179.179	1.184.272	20.629
2005	2.015.521	314.077	1.653.819	47.625
2006	3.268.003	672.010	2.448.505	147.488
2007	4.945.671	1.126.233	3.358.057	461.381

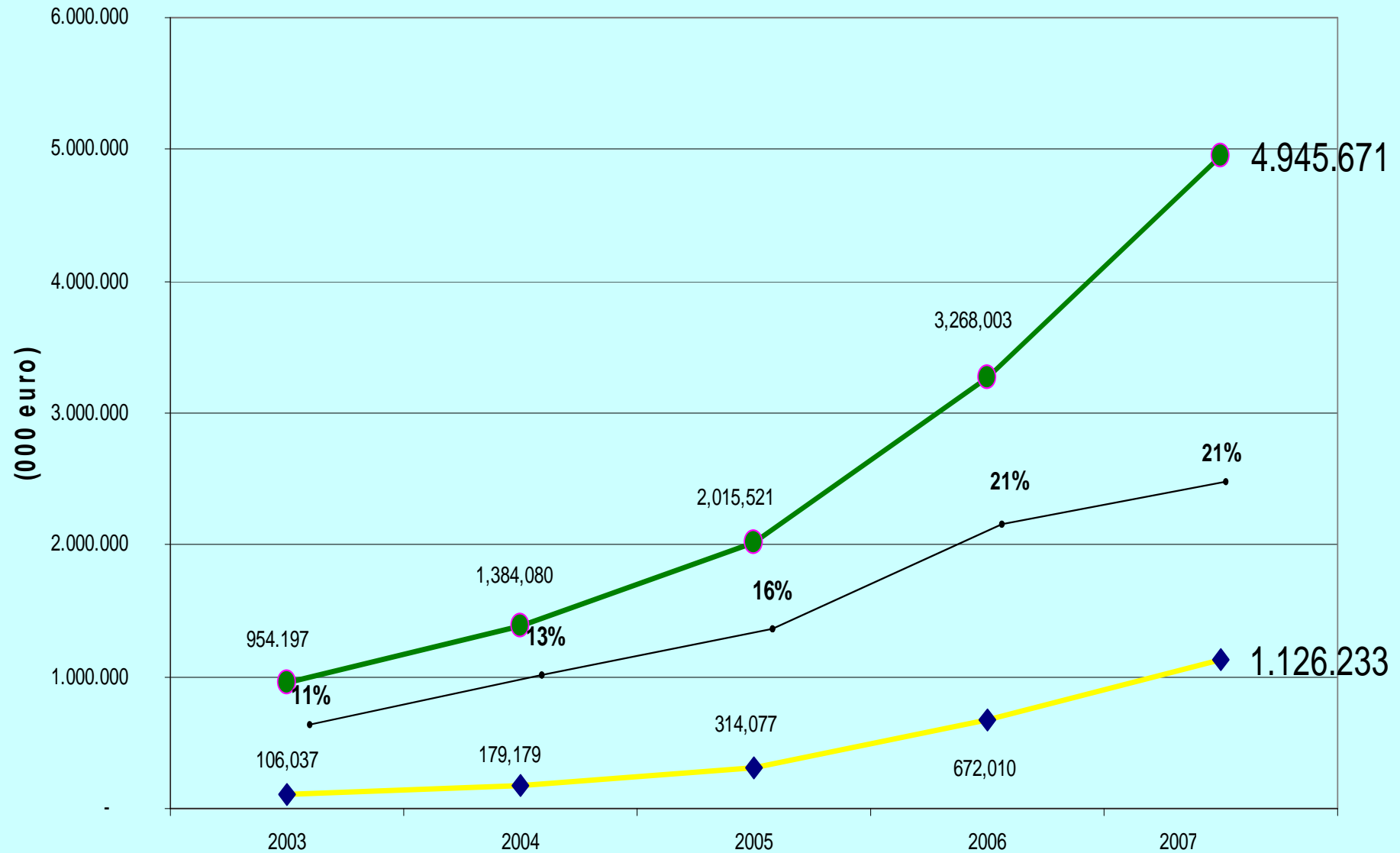
# Romanian Leasing Market - by type of Lessors

## Piata Totala de Leasing - dupa Categoria Societatilor de Leasing

### 2003 - 2007

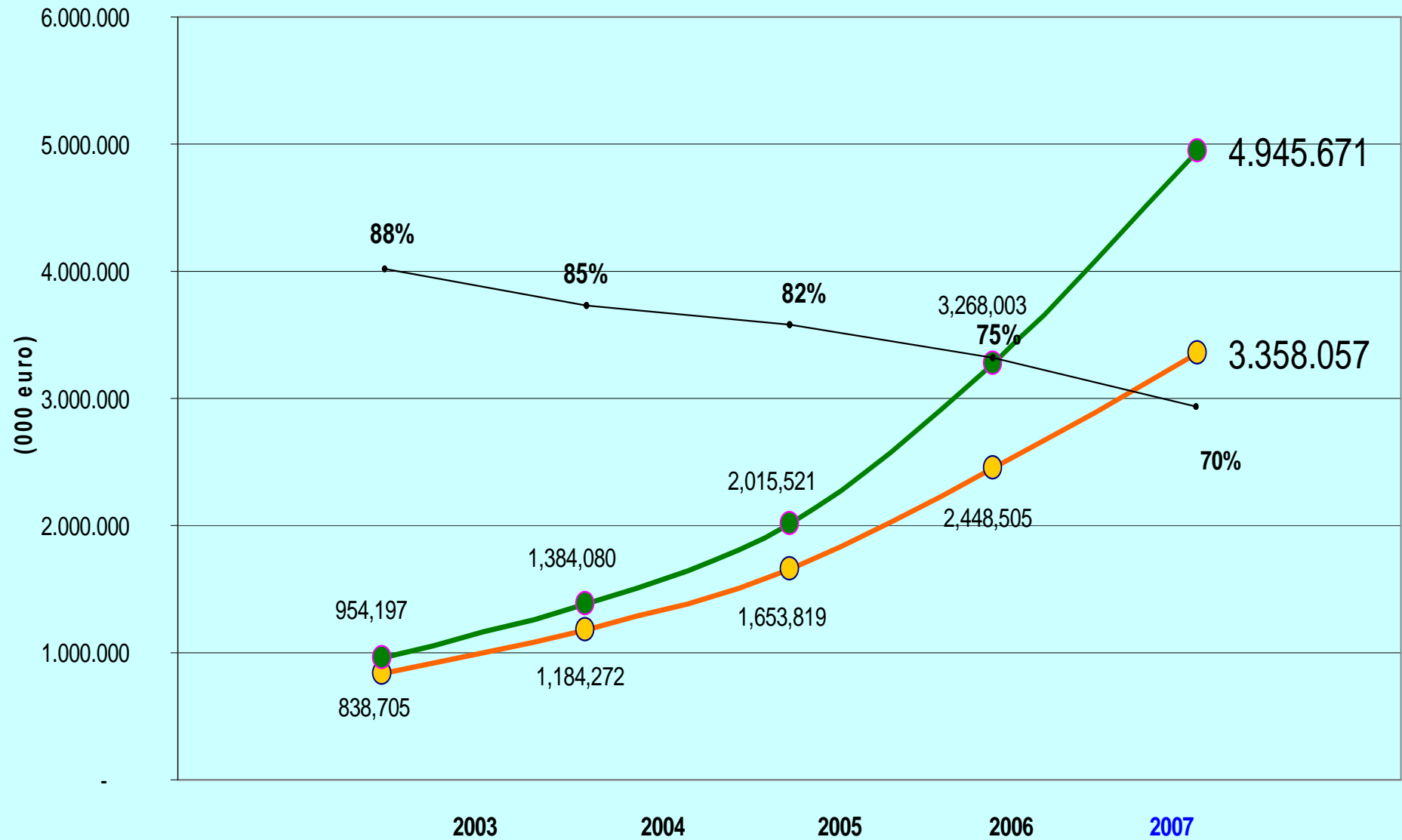


**Piata Totala de Leasing - Echipamente / Romanian Leasing Market - Equipment  
2003 - 2007**



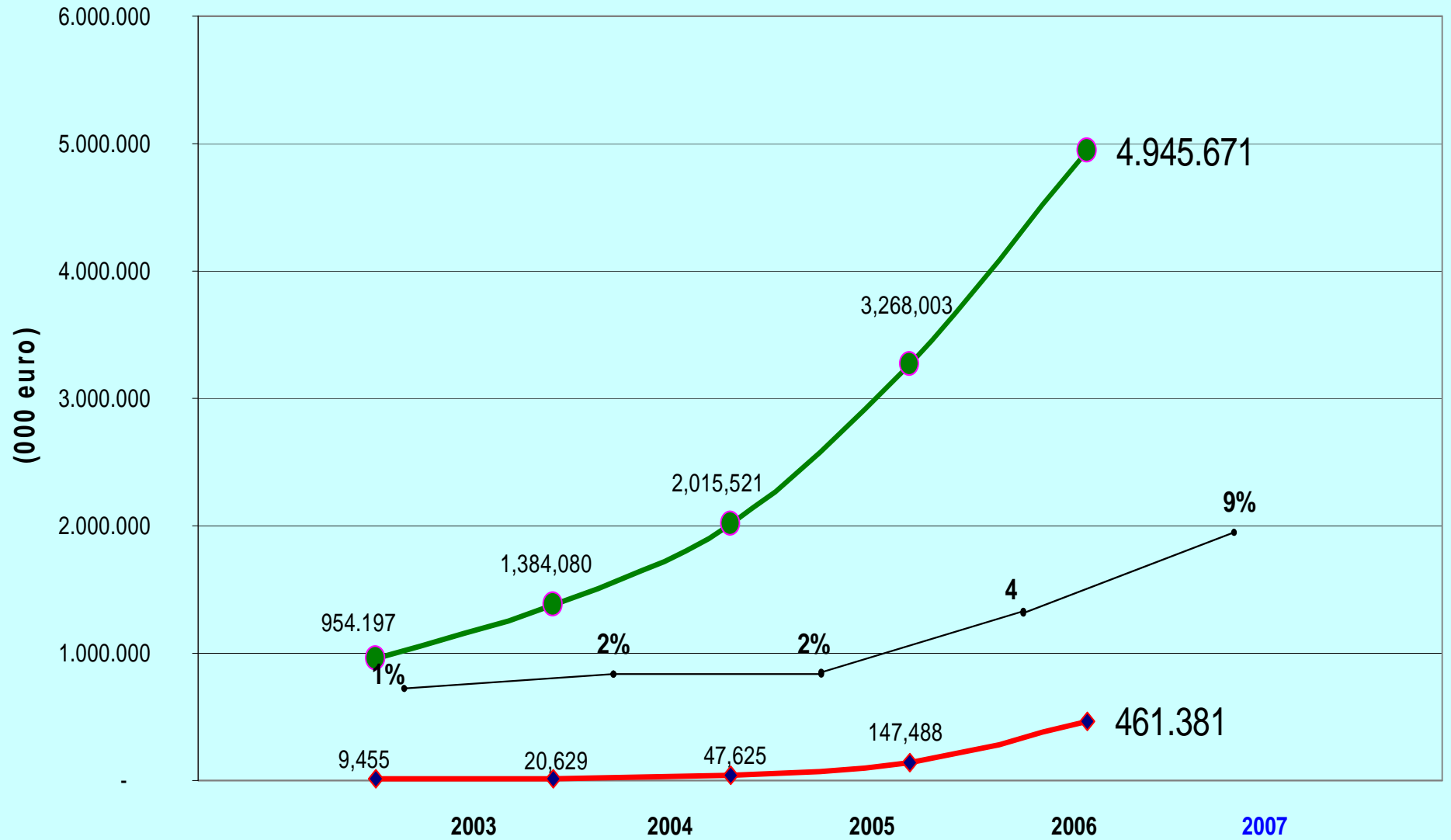
◆ Echipamente / Equipment   
 ● Piata Totala Leasing / Total Leasing Market   
 ● Pondere segment bunuri / Weight per good segment

**Piata Totala de Leasing - Vehicule / Romanian Leasing Market - Vehicles  
2003 - 2007**



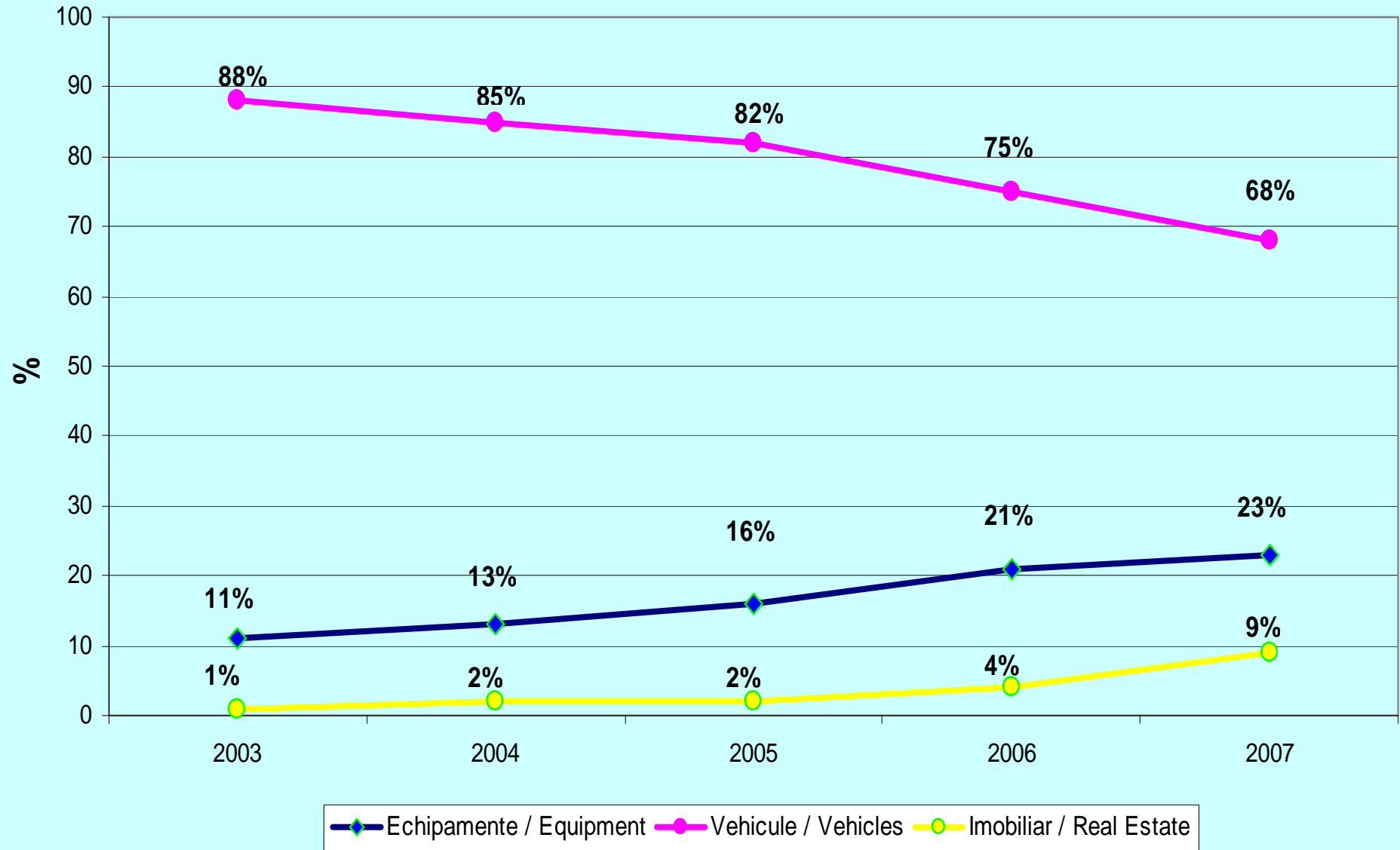
● Vehicule / Vehicles   
 ● Piata Totala Leasing / Total Leasing Market   
 ● Pondere segment bunuri / Wheight per good segment

## Piata totala de Leasing - Imobiliar / Romanian Leasing Market - Real Estate 2003 - 2007

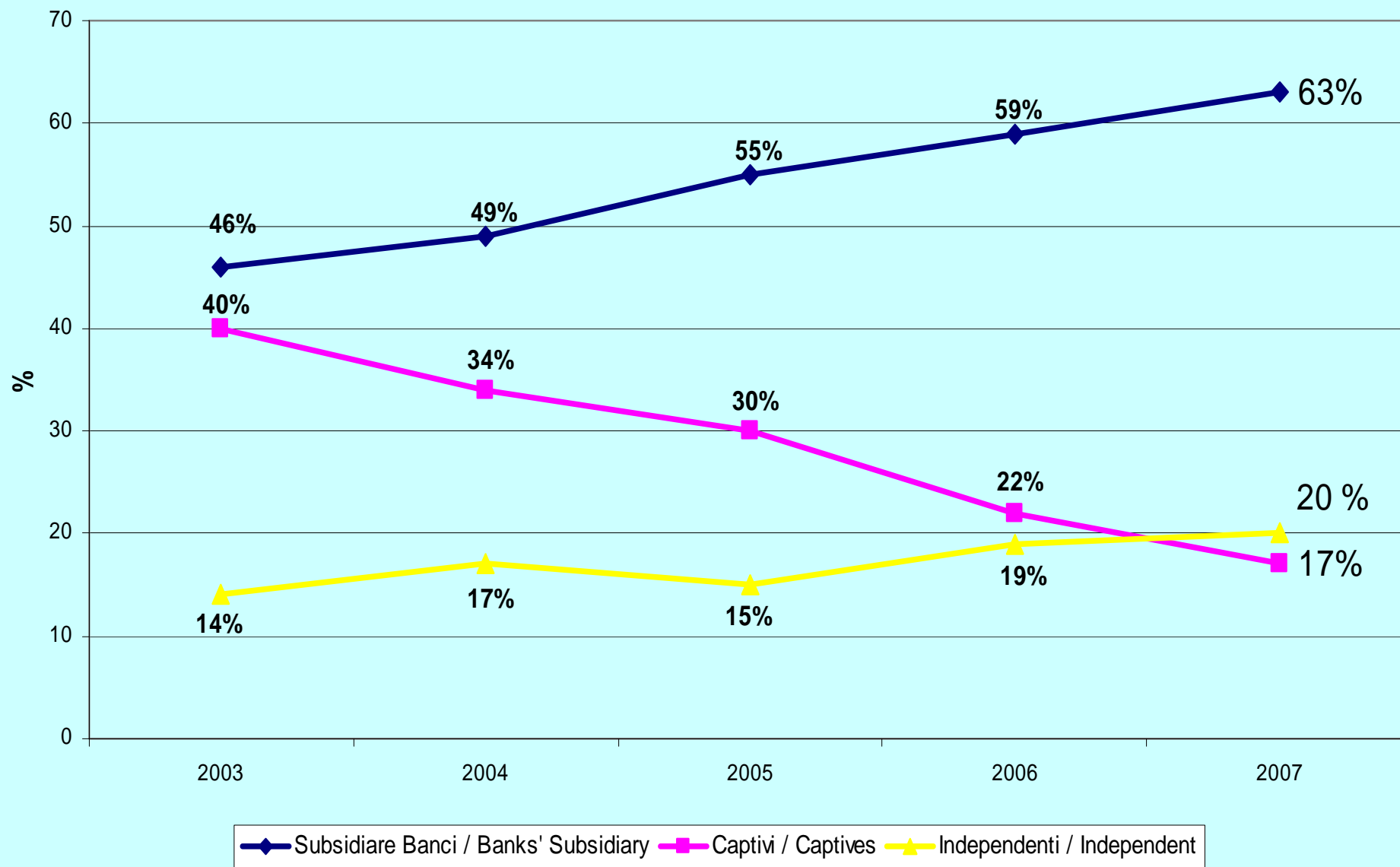


◆ Imobiliar / Real Estate   
 ● Piata Totala Leasing / Total Leasing Market   
 ● Pondere segment bunuri / Weight per good segment

**Pondere Segment Bunuri Finantate - Total Piata Leasing**  
**Wheight Per Good Segment - Total Leasing Market**  
**2003 - 2007**



**Ponderele Categoriilor pe Tipuri Societati de Leasing - Total Piata Leasing**  
**Wheight per Leasing Company Category - Total Leasing Market**  
**2003 - 2007**





## Piata Societatilor de Leasing - Dupa Categoria Societatilor de Leasing

### Romanian Leasing Market by Type of Lessor

2003 - 2007

